

*Disclaimer: Copy & Propagation of data/information from Jagaran Women Resource Center is appreciated provided that the source is duly accredited.*

## Inclusion in Political Parties

### 1. Total Population Researched

Sex	No.	%
Male	4123	75.9
Female	1060	19.5
Total	5183	95.4
Sex not reported	250	4.6
<b>Total</b>	<b>5433</b>	<b>100.0</b>

Source: Jagaran Research 2011

### 2. Status of Women Inclusion in Political Parties

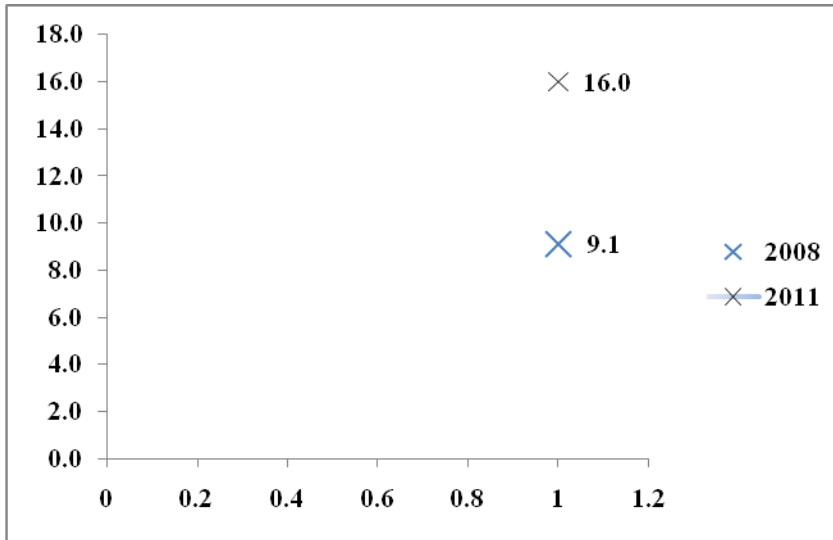
#### Central Committees

Parties	Male		Female		Total	
	No.	%	No.	%	No,	%
UCPN	132	91.0	13	9.0	145	13.5
NC	62	78.5	17	21.5	79	7.3
UML	97	83.6	19	16.4	116	10.8
RPP	43	86.0	7	14.0	50	4.6
RPP N	94	86.2	15	13.8	109	10.1
ML	29	82.9	6	17.1	35	3.3
SP	18	94.7	1	5.3	19	1.8
RJP	60	88.2	8	11.8	68	6.3
MJF N	32	94.1	2	5.9	34	3.2
MJF D	40	90.9	4	9.1	44	4.1
TMLP	31	72.1	12	27.9	43	4.0
CPN (U)	35	77.8	10	22.2	45	4.2
CPN U	32	94.1	2	5.9	34	3.2
NMKP	22	88.0	3	12.0	25	2.3
SLRM	20	80.0	5	20.0	25	2.3
NSP A	15	78.9	4	21.1	19	1.8
NJD	27	65.9	14	34.1	41	3.8
NRP	40	80.0	10	20.0	50	4.6
DJP	23	69.7	10	30.3	33	3.1
RJM	29	93.5	2	6.5	31	2.9
SJP	23	74.2	8	25.8	31	2.9
<b>Total</b>	<b>904</b>	<b>84.0</b>	<b>172</b>	<b>16.0</b>	<b>1076</b>	<b>100.0</b>

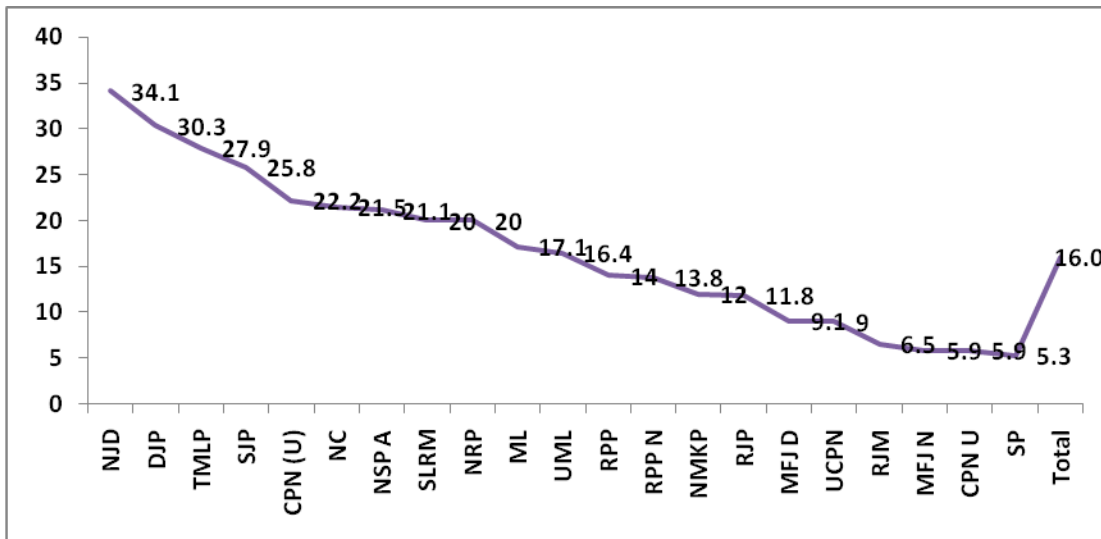
Source: Jagaran Research 2011

*Disclaimer: Copy & Propagation of data/information from Jagaran Women Resource Center is appreciated provided that the source is duly accredited.*

**Participation Trend in Central Committees (N = 172 out of 1076)**



**By Parties (N = 172 out of 1076)**



**Disclaimer: Copy & Propagation of data/information from Jagaran Women Resource Center is appreciated provided that the source is duly accredited.**

**Portfolio Members**

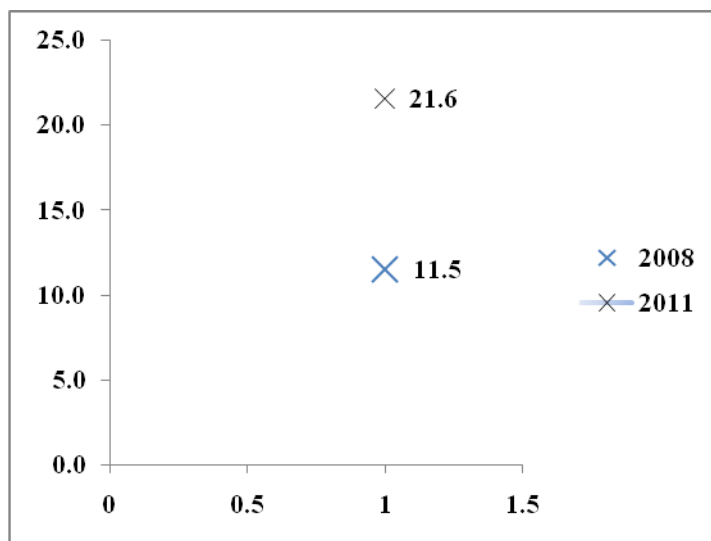
Parties	Male		Female		Total	
	No.	%	No.	%	No,	%
UCPN	7	100.0			7	3.8
NC	3	75.0	1	25.0	4	2.2
UML	7	87.5	1	12.5	8	4.3
RPP	7	100.0			7	3.8
RPP N	13	100.0			13	7.0
ML	9	90.0	1	10.0	10	5.4
SP	10	100.0			10	5.4
RJP	15	100.0			15	8.1
MJF N	4	80.0	1	20.0	5	2.7
MJF D	6	85.7	1	14.3	7	3.8
TMLP	6	100.0			6	3.2
CPN (U)	8	80.0	2	20.0	10	5.4
CPN U	4	66.7	2	33.3	6	3.2
NMKP	5	100.0			5	2.7
SLRM	5	83.3	1	16.7	6	3.2
NSP A	4	66.7	2	33.3	6	3.2
NJD	10	71.4	4	28.6	14	7.6
NRP	9	75.0	3	25.0	12	6.5
DJP	10	62.5	6	37.5	16	8.6
RJM	8	88.9	1	11.1	9	4.9
SJP	6	66.7	3	33.3	9	4.9
<b>Total</b>	<b>156</b>	<b>84.3</b>	<b>29</b>	<b>15.7</b>	<b>185</b>	<b>100.0</b>

*Disclaimer: Copy & Propagation of data/information from Jagaran Women Resource Center is appreciated provided that the source is duly accredited.*

### District Committees

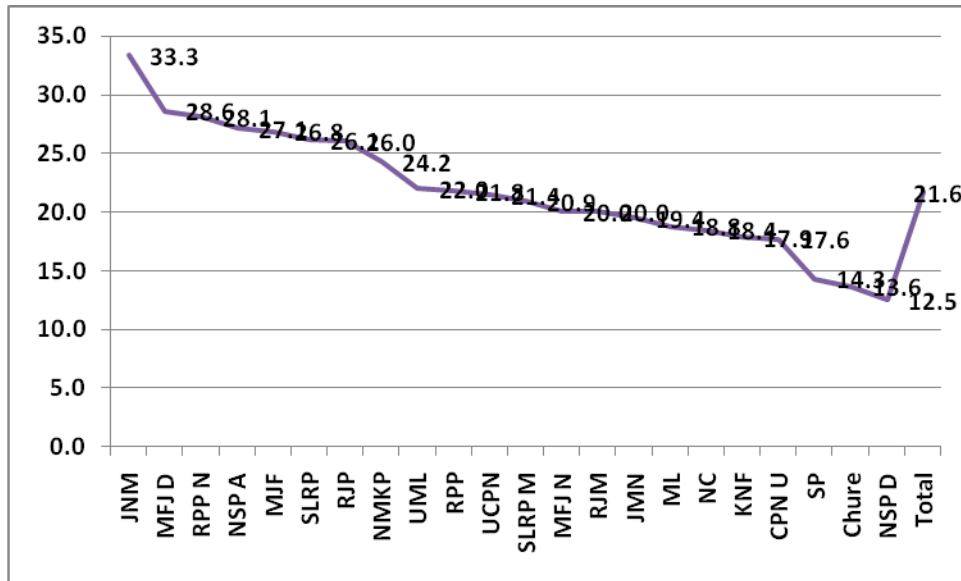
Parties	Male		Female		Total	
	No.	%	No.	%	No.	%
UCPN	1396	78.6	381	21.4	1777	43.3
NC	359	81.6	81	18.4	440	10.7
UML	695	78.0	196	22.0	891	21.7
RPP	115	78.2	32	21.8	147	3.6
RPP N	110	71.9	43	28.1	153	3.7
SLRP	17	73.9	6	26.1	23	.6
SLRP M	53	79.1	14	20.9	67	1.6
ML	39	81.3	9	18.8	48	1.2
Chure	19	86.4	3	13.6	22	.5
SP	42	85.7	7	14.3	49	1.2
RJP	74	74.0	26	26.0	100	2.4
MJF N	16	80.0	4	20.0	20	.5
NSP D	28	87.5	4	12.5	32	.8
MJF D	45	71.4	18	28.6	63	1.5
KNF	23	82.1	5	17.9	28	.7
CPN U	14	82.4	3	17.6	17	.4
NMKP	50	75.8	16	24.2	66	1.6
NSP A	35	72.9	13	27.1	48	1.2
JMN	29	80.6	7	19.4	36	.9
RJM	24	80.0	6	20.0	30	.7
MJF	30	73.2	11	26.8	41	1.0
JNM	6	66.7	3	33.3	9	.2
<b>Total</b>	<b>3219</b>	<b>78.4</b>	<b>888</b>	<b>21.6</b>	<b>4107</b>	<b>100.0</b>

### Inclusion Trend in District Committees (N = 888 out of 4107)



*Disclaimer: Copy & Propagation of data/information from Jagaran Women Resource Center is appreciated provided that the source is duly accredited.*

**By parties (N = 888 out of 4107)**

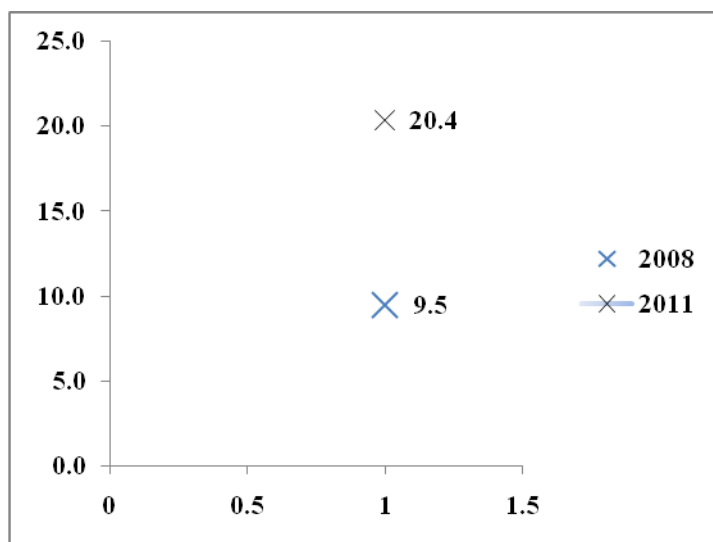


**Both**

	Male		Female		Total	
	No.	%	No.	%	No.	%
UCPN	1528	79.5	394	20.5	1922	37.1
NC	421	81.1	98	18.9	519	10.0
UML	792	78.6	215	21.4	1007	19.4
RPP	158	80.2	39	19.8	197	3.8
RPP N	204	77.9	58	22.1	262	5.1
SLRP	17	73.9	6	26.1	23	.4
SLRP M	53	79.1	14	20.9	67	1.3
ML	68	81.9	15	18.1	83	1.6
Chure	19	86.4	3	13.6	22	.4
SP	60	88.2	8	11.8	68	1.3

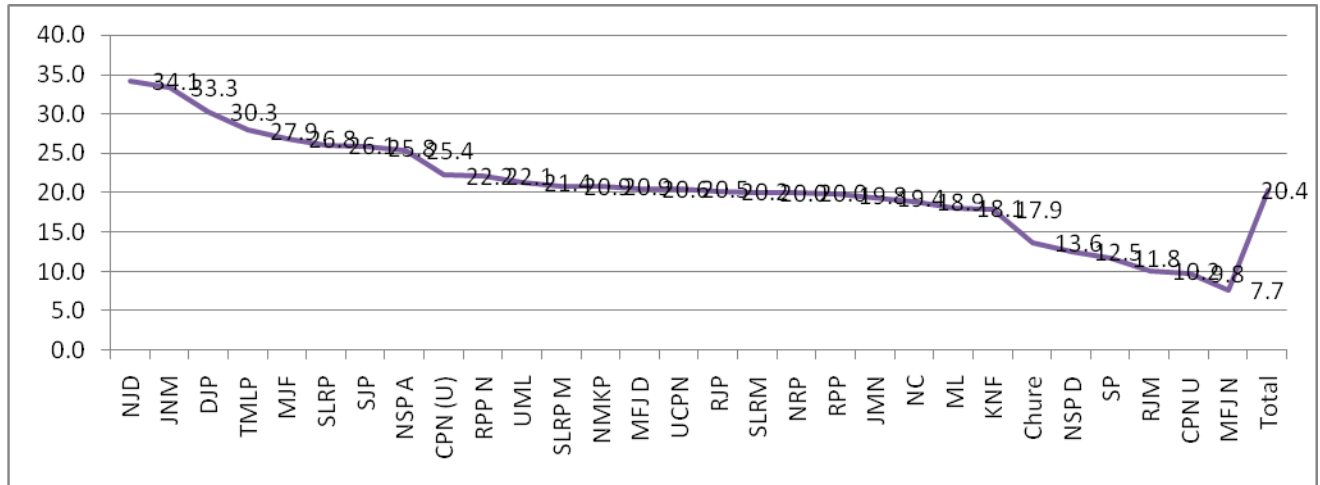
**Disclaimer: Copy & Propagation of data/information from Jagaran Women Resource Center is appreciated provided that the source is duly accredited.**

RJP	134	79.8	34	20.2	168	3.2
MJF N	48	92.3	4	7.7	52	1.0
NSP D	28	87.5	4	12.5	32	.6
MJF D	85	79.4	22	20.6	107	2.1
KNF	23	82.1	5	17.9	28	.5
TMLP	31	72.1	12	27.9	43	.8
CPN (U)	35	77.8	10	22.2	45	.9
CPN U	46	90.2	5	9.8	51	1.0
NMKP	72	79.1	19	20.9	91	1.8
SLRM	20	80.0	5	20.0	25	.5
NSP A	50	74.6	17	25.4	67	1.3
NJD	27	65.9	14	34.1	41	.8
NRP	40	80.0	10	20.0	50	1.0
DJP	23	69.7	10	30.3	33	.6
JMN	29	80.6	7	19.4	36	.7
RJM	53	89.8	6	10.2	59	1.1
SJP	23	74.2	8	25.8	31	.6
MJF	30	73.2	11	26.8	41	.8
JNM	6	66.7	3	33.3	9	.2
<b>Total</b>	<b>4123</b>	<b>79.6</b>	<b>1056</b>	<b>20.4</b>	<b>5179</b>	<b>100.0</b>



**By parties**

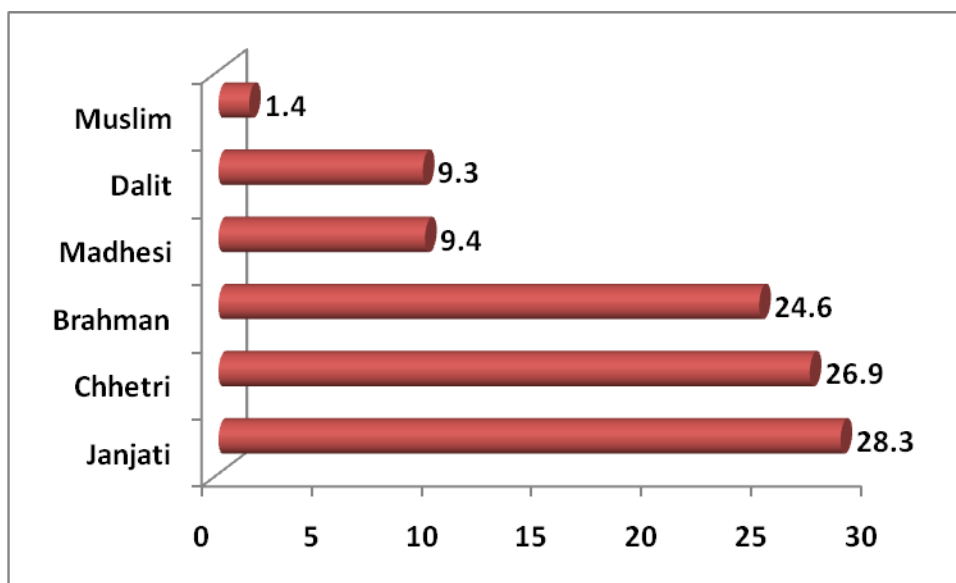
**Disclaimer: Copy & Propagation of data/information from Jagaran Women Resource Center is appreciated provided that the source is duly accredited.**



### 3 Political Inclusion by Caste/Ethnicity

#### All CAST

Caste/Ethnicities	No.	%
Brahman	1339	24.6
Chhetri	1462	26.9
Janjati	1537	28.3
Dalit	507	9.3
Muslim	77	1.4
Madhesi	511	9.4
<b>Total</b>	<b>5433</b>	<b>100.0</b>



**Disclaimer: Copy & Propagation of data/information from Jagaran Women Resource Center is appreciated provided that the source is duly accredited.**

### Political Inclusion By Sex

Caste/Ethnicity	Male		Female		Total	
	No.	%	No.	%	No,	%
Brahman	1007	79.1	266	20.9	1273	24.6
Chhetri	1119	78.5	307	21.5	1426	27.5
Janjati	1165	79.5	301	20.5	1466	28.3
Dalit	368	76.0	116	24.0	484	9.3
Muslim	71	92.2	6	7.8	77	1.5
Madhesi	393	86.0	64	14.0	457	8.8
<b>Total</b>	<b>4123</b>	<b>79.5</b>	<b>1060</b>	<b>20.5</b>	<b>5183</b>	<b>100.0</b>

### Political Inclusion By Parties

#### UCPN

Parties	Female
Brahman	20.2
Chhetri	22.3
Janjati	19.3
Dalit	20.5
Muslim	11.8
Madhesi	15.9
Total	20.5

Dalit	26.9
Muslim	
Madhesi	5.0
Total	21.4

#### NC

Brahman	15.7
Chhetri	19.0
Janjati	22.5
Dalit	26.9
Muslim	
Madhesi	20.8
Total	18.9

#### UML

Brahman	24.7
Chhetri	18.6
Janjati	23.3



**Disclaimer: Copy & Propagation of data/information from Jagaran Women Resource Center is appreciated provided that the source is duly accredited.**

**RPP**

RPP	Brahman	28.9
	Chhetri	17.7
	Janjati	15.4
	Dalit	36.4
	Muslim	
	Madhesi	10.0
	Total	19.8

**RPP N**

RPP N	Brahman	23.0
	Chhetri	19.1
	Janjati	22.8
	Dalit	37.5
	Madhesi	
	Total	22.1

SLRP	Brahman	33.3
	Janjati	25.0
	Total	26.1

SLRP M	Brahman	
	Chhetri	
	Janjati	22.0
	Dalit	25.0
	Total	20.9

**ML**

ML	Brahman	20.5
	Chhetri	13.3
	Janjati	16.7
	Dalit	25.0
	Madhesi	
	Total	18.1

Chure	Brahman	22.2
	Chhetri	20.0
	Janjati	

**Disclaimer: Copy & Propagation of data/information from Jagaran Women Resource Center is appreciated provided that the source is duly accredited.**

	Dalit	
	Madhesi	
	Total	13.6

SP	Brahman	
	Janjati	17.6
	Dalit	25.0
	Madhesi	8.7
	Total	11.8

RJP	Brahman	23.7
	Chhetri	25.7
	Janjati	15.8
	Dalit	
	Muslim	
	Madhesi	9.1
	Total	20.2

MJF N	Brahman	
	Chhetri	
	Janjati	50.0
	Dalit	66.7
	Muslim	
	Madhesi	7.3
	Total	11.1

NSP D	Janjati	21.4
	Dalit	33.3
	Muslim	
	Madhesi	
	Total	12.5

MJF D	Chhetri	
	Janjati	25.0
	Dalit	33.3
	Muslim	
	Madhesi	20.4
	Total	20.6

**Disclaimer: Copy & Propagation of data/information from Jagaran Women Resource Center is appreciated provided that the source is duly accredited.**

KNF	Janjati	16.0
	Dalit	33.3
	Total	17.9

TMLP	Brahman	
	Chhetri	87.5
	Janjati	50.0
	Dalit	50.0
	Muslim	
	Madhesi	11.1
	Total	27.9

CPN (U)	Brahman	6.7
	Chhetri	80.0
	Janjati	12.5
	Dalit	
	Muslim	
	Madhesi	28.6
	Total	22.2

CPN U	Brahman	
	Chhetri	33.3
	Janjati	10.3
	Dalit	
	Madhesi	
	Total	9.8

NMKP	Brahman	25.0
	Chhetri	22.2
	Janjati	17.9
	Dalit	20.0
	Madhesi	
	Total	20.9

SLRM	Janjati	20.0
	Total	20.0
NSP A	Brahman	25.0
	Chhetri	33.3
	Janjati	50.0
	Dalit	42.9

**Disclaimer: Copy & Propagation of data/information from Jagaran Women Resource Center is appreciated provided that the source is duly accredited.**

	Muslim	
	Madhesi	20.5
	Total	25.4
NJD	Brahman	28.6
	Chhetri	25.0
	Janjati	
	Dalit	25.0
	Madhesi	40.0
	Total	34.1
NRP	Janjati	20.0
	Total	20.0
DJP	Janjati	37.5
	Dalit	26.7
	Muslim	37.5
	Madhesi	
	Total	30.3
JMN	Brahman	
	Chhetri	9.1
	Janjati	28.6
	Dalit	33.3
	Muslim	
	Madhesi	33.3
	Total	19.4
RJM	Brahman	11.8
	Chhetri	16.0
	Janjati	
	Dalit	16.7
	Muslim	50.0
	Total	13.1
SJP	Brahman	
	Chhetri	20.0
	Janjati	50.0
	Dalit	
	Madhesi	
	Total	25.8
MJF	Brahman	33.3
	Chhetri	33.3
	Janjati	
	Dalit	16.7
	Total	26.8
JNM	Brahman	25.0
	Chhetri	40.0
	Total	33.3

**Disclaimer: Copy & Propagation of data/information from Jagaran Women Resource Center is appreciated provided that the source is duly accredited.**

### Central Committees

		Male		Female		Total	
		No.	%	No.	%	No.	%
UCPN	Brahman	57	90.5	6	9.5	63	5.9
	Chhetri	30	93.8	2	6.3	32	3.0
	Janjati	36	87.8	5	12.2	41	3.8
	Dalit	4	100.0			4	.4
	Muslim	1	100.0			1	.1
	Madhesi	4	100.0			4	.4
	Total	132	91.0	13	9.0	145	13.5
NC	Brahman	26	83.9	5	16.1	31	2.9
	Chhetri	13	81.3	3	18.8	16	1.5
	Janjati	13	72.2	5	27.8	18	1.7
	Dalit	5	71.4	2	28.6	7	.7
	Muslim	2	100.0			2	.2
	Madhesi	3	60.0	2	40.0	5	.5
	Total	62	78.5	17	21.5	79	7.3
UML	Brahman	37	86.0	6	14.0	43	4.0
	Chhetri	19	73.1	7	26.9	26	2.4
	Janjati	21	80.8	5	19.2	26	2.4
	Dalit	5	100.0			5	.5
	Muslim	2	100.0			2	.2
	Madhesi	13	92.9	1	7.1	14	1.3
	Total	97	83.6	19	16.4	116	10.8
RPP	Brahman	11	84.6	2	15.4	13	1.2
	Chhetri	13	81.3	3	18.8	16	1.5
	Janjati	13	92.9	1	7.1	14	1.3
	Dalit	1	50.0	1	50.0	2	.2
	Muslim	1	100.0			1	.1
	Madhesi	4	100.0			4	.4
	Total	43	86.0	7	14.0	50	4.6
RPP N	Brahman	25	86.2	4	13.8	29	2.7
	Chhetri	35	85.4	6	14.6	41	3.8
	Janjati	21	80.8	5	19.2	26	2.4
	Dalit	4	100.0			4	.4
	Madhesi	9	100.0			9	.8
	Total	94	86.2	15	13.8	109	10.1
ML	Brahman	17	77.3	5	22.7	22	2.0
	Chhetri	5	83.3	1	16.7	6	.6
	Janjati	3	100.0			3	.3

**Disclaimer: Copy & Propagation of data/information from Jagaran Women Resource Center is appreciated provided that the source is duly accredited.**

	Dalit	2	100.0			2	.2
	Madhesi	2	100.0			2	.2
	Total	29	82.9	6	17.1	35	3.3
SP	Janjati	3	100.0			3	.3
	Madhesi	15	93.8	1	6.3	16	1.5
	Total	18	94.7	1	5.3	19	1.8
RJP	Brahman	18	85.7	3	14.3	21	2.0
	Chhetri	20	87.0	3	13.0	23	2.1
	Janjati	15	88.2	2	11.8	17	1.6
	Dalit	4	100.0			4	.4
	Madhesi	3	100.0			3	.3
	Total	60	88.2	8	11.8	68	6.3
MJF N	Chhetri	1	100.0			1	.1
	Janjati	1	100.0			1	.1
	Dalit			1	100.0	1	.1
	Muslim	3	100.0			3	.3
	Madhesi	27	96.4	1	3.6	28	2.6
	Total	32	94.1	2	5.9	34	3.2
MJF D	Chhetri	2	100.0			2	.2
	Janjati	10	100.0			10	.9
	Dalit	1	100.0			1	.1
	Muslim	4	100.0			4	.4
	Madhesi	23	85.2	4	14.8	27	2.5
	Total	40	90.9	4	9.1	44	4.1
TMLP	Brahman	1	100.0			1	.1
	Chhetri	1	12.5	7	87.5	8	.7
	Janjati	1	50.0	1	50.0	2	.2
	Dalit	1	50.0	1	50.0	2	.2
	Muslim	3	100.0			3	.3
	Madhesi	24	88.9	3	11.1	27	2.5
	Total	31	72.1	12	27.9	43	4.0
CPN (U)	Brahman	14	93.3	1	6.7	15	1.4
	Chhetri	1	20.0	4	80.0	5	.5
	Janjati	7	87.5	1	12.5	8	.7
	Dalit	2	100.0			2	.2
	Muslim	1	100.0			1	.1
	Madhesi	10	71.4	4	28.6	14	1.3
	Total	35	77.8	10	22.2	45	4.2
CPN U	Brahman	10	100.0			10	.9
	Chhetri	4	66.7	2	33.3	6	.6
	Janjati	12	100.0			12	1.1
	Dalit	2	100.0			2	.2
	Madhesi	4	100.0			4	.4
	Total	32	94.1	2	5.9	34	3.2

**Disclaimer: Copy & Propagation of data/information from Jagaran Women Resource Center is appreciated provided that the source is duly accredited.**

NMKP	Brahman	4	100.0			4	.4
	Chhetri	5	100.0			5	.5
	Janjati	11	78.6	3	21.4	14	1.3
	Dalit	1	100.0			1	.1
	Madhesi	1	100.0			1	.1
	Total	22	88.0	3	12.0	25	2.3
SLRM	Janjati	20	80.0	5	20.0	25	2.3
	Total	20	80.0	5	20.0	25	2.3
NSP A	Madhesi	15	78.9	4	21.1	19	1.8
	Total	15	78.9	4	21.1	19	1.8
NJD	Brahman	5	71.4	2	28.6	7	.7
	Chhetri	3	75.0	1	25.0	4	.4
	Janjati	1	100.0			1	.1
	Dalit	3	75.0	1	25.0	4	.4
	Madhesi	15	60.0	10	40.0	25	2.3
	Total	27	65.9	14	34.1	41	3.8
NRP	Janjati	40	80.0	10	20.0	50	4.6
	Total	40	80.0	10	20.0	50	4.6
DJP	Janjati	5	62.5	3	37.5	8	.7
	Dalit	11	73.3	4	26.7	15	1.4
	Muslim	5	62.5	3	37.5	8	.7
	Madhesi	2	100.0			2	.2
	Total	23	69.7	10	30.3	33	3.1
RJM	Brahman	8	88.9	1	11.1	9	.8
	Chhetri	13	100.0			13	1.2
	Janjati	7	100.0			7	.7
	Muslim	1	50.0	1	50.0	2	.2
	Total	29	93.5	2	6.5	31	2.9
SJP	Brahman	3	100.0			3	.3
	Chhetri	8	80.0	2	20.0	10	.9
	Janjati	6	50.0	6	50.0	12	1.1
	Dalit	2	100.0			2	.2
	Madhesi	4	100.0			4	.4
	Total	23	74.2	8	25.8	31	2.9

### District Committees

Ethnicity	Male		Female		Total	
	No.	%	No.	%	No.	%
Brahman	771	76.9	231	23.1	1002	24.4
Chhetri	946	78.1	266	21.9	1212	29.5
Janjati	919	78.7	249	21.3	1168	28.4
Dalit	320	75.1	106	24.9	426	10.4
Muslim	48	96.0	2	4.0	50	1.2

**Disclaimer: Copy & Propagation of data/information from Jagaran Women Resource Center is appreciated provided that the source is duly accredited.**

Madhesi	215	86.3	34	13.7	249	6.1
<b>Total</b>	<b>3219</b>	<b>78.4</b>	<b>888</b>	<b>21.6</b>	<b>4107</b>	<b>100.0</b>

### By Parties

Parties	Ethnicity	Male		Female		Total	
		No.	%	No.	%	No.	%
UCPN	Brahman	291	78.0	82	22.0	373	9.1
	Chhetri	482	76.9	145	23.1	627	15.3
	Janjati	374	80.1	93	19.9	467	11.4
	Dalit	186	79.1	49	20.9	235	5.7
	Muslim	14	87.5	2	12.5	16	.4
	Madhesi	49	83.1	10	16.9	59	1.4
	<b>Total</b>	<b>1396</b>	<b>78.6</b>	<b>381</b>	<b>21.4</b>	<b>1777</b>	<b>43.3</b>
NC	Brahman	141	84.4	26	15.6	167	4.1
	Chhetri	89	80.9	21	19.1	110	2.7
	Janjati	94	78.3	26	21.7	120	2.9
	Dalit	14	73.7	5	26.3	19	.5
	Muslim	5	100.0			5	.1
	Madhesi	16	84.2	3	15.8	19	.5
	<b>Total</b>	<b>359</b>	<b>81.6</b>	<b>81</b>	<b>18.4</b>	<b>440</b>	<b>10.7</b>
UML	Brahman	213	73.7	76	26.3	289	7.0
	Chhetri	195	82.3	42	17.7	237	5.8
	Janjati	177	76.3	55	23.7	232	5.6
	Dalit	52	71.2	21	28.8	73	1.8
	Muslim	14	100.0			14	.3
	Madhesi	44	95.7	2	4.3	46	1.1
	<b>Total</b>	<b>695</b>	<b>78.0</b>	<b>196</b>	<b>22.0</b>	<b>891</b>	<b>21.7</b>
RPP	Brahman	21	65.6	11	34.4	32	.8
	Chhetri	38	82.6	8	17.4	46	1.1
	Janjati	42	82.4	9	17.6	51	1.2
	Dalit	6	66.7	3	33.3	9	.2
	Muslim	3	100.0			3	.1
	Madhesi	5	83.3	1	16.7	6	.1
	<b>Total</b>	<b>115</b>	<b>78.2</b>	<b>32</b>	<b>21.8</b>	<b>147</b>	<b>3.6</b>
RPP N	Brahman	22	68.8	10	31.3	32	.8
	Chhetri	37	77.1	11	22.9	48	1.2
	Janjati	40	75.5	13	24.5	53	1.3
	Dalit	11	55.0	9	45.0	20	.5
	<b>Total</b>	<b>110</b>	<b>71.9</b>	<b>43</b>	<b>28.1</b>	<b>153</b>	<b>3.7</b>
SLRP	Brahman	2	66.7	1	33.3	3	.1
	Janjati	15	75.0	5	25.0	20	.5



**Disclaimer: Copy & Propagation of data/information from Jagaran Women Resource Center is appreciated provided that the source is duly accredited.**

	<b>Total</b>	<b>17</b>	<b>73.9</b>	<b>6</b>	<b>26.1</b>	<b>23</b>	<b>.6</b>
SLRP M	Brahman	3	100.0			3	.1
	Chhetri	1	100.0			1	.0
	Janjati	46	78.0	13	22.0	59	1.4
	Dalit	3	75.0	1	25.0	4	.1
	<b>Total</b>	<b>53</b>	<b>79.1</b>	<b>14</b>	<b>20.9</b>	<b>67</b>	<b>1.6</b>
ML	Brahman	18	81.8	4	18.2	22	.5
	Chhetri	8	88.9	1	11.1	9	.2
	Janjati	12	80.0	3	20.0	15	.4
	Dalit	1	50.0	1	50.0	2	.0
	<b>Total</b>	<b>39</b>	<b>81.3</b>	<b>9</b>	<b>18.8</b>	<b>48</b>	<b>1.2</b>
Chure	Brahman	7	77.8	2	22.2	9	.2
	Chhetri	4	80.0	1	20.0	5	.1
	Janjati	3	100.0			3	.1
	Dalit	1	100.0			1	.0
	Madhesi	4	100.0			4	.1
	<b>Total</b>	<b>19</b>	<b>86.4</b>	<b>3</b>	<b>13.6</b>	<b>22</b>	<b>.5</b>
SP	Brahman	1	100.0			1	.0
	Janjati	11	78.6	3	21.4	14	.3
	Dalit	3	75.0	1	25.0	4	.1
	Madhesi	27	90.0	3	10.0	30	.7
	<b>Total</b>	<b>42</b>	<b>85.7</b>	<b>7</b>	<b>14.3</b>	<b>49</b>	<b>1.2</b>
RJP	Brahman	11	64.7	6	35.3	17	.4
	Chhetri	32	68.1	15	31.9	47	1.1
	Janjati	17	81.0	4	19.0	21	.5
	Dalit	6	100.0			6	.1
	Muslim	1	100.0			1	.0
	Madhesi	7	87.5	1	12.5	8	.2
	<b>Total</b>	<b>74</b>	<b>74.0</b>	<b>26</b>	<b>26.0</b>	<b>100</b>	<b>2.4</b>
MJF N	Brahman	2	100.0			2	.0
	Janjati			1	100.0	1	.0
	Dalit	1	50.0	1	50.0	2	.0
	Muslim	2	100.0			2	.0
	Madhesi	11	84.6	2	15.4	13	.3
	<b>Total</b>	<b>16</b>	<b>80.0</b>	<b>4</b>	<b>20.0</b>	<b>20</b>	<b>.5</b>
NSP D	Janjati	11	78.6	3	21.4	14	.3
	Dalit	2	66.7	1	33.3	3	.1
	Muslim	1	100.0			1	.0
	Madhesi	14	100.0			14	.3
	<b>Total</b>	<b>28</b>	<b>87.5</b>	<b>4</b>	<b>12.5</b>	<b>32</b>	<b>.8</b>
MJF D	Chhetri	2	100.0			2	.0
	Janjati	14	63.6	8	36.4	22	.5
	Dalit	5	62.5	3	37.5	8	.2
	Muslim	4	100.0			4	.1

**Disclaimer: Copy & Propagation of data/information from Jagaran Women Resource Center is appreciated provided that the source is duly accredited.**

	Madhesi	20	74.1	7	25.9	27	.7
	<b>Total</b>	<b>45</b>	<b>71.4</b>	<b>18</b>	<b>28.6</b>	<b>63</b>	<b>1.5</b>
KNF	Janjati	21	84.0	4	16.0	25	.6
	Dalit	2	66.7	1	33.3	3	.1
	<b>Total</b>	<b>23</b>	<b>82.1</b>	<b>5</b>	<b>17.9</b>	<b>28</b>	<b>.7</b>
CPN U	Janjati	14	82.4	3	17.6	17	.4
	<b>Total</b>	<b>14</b>	<b>82.4</b>	<b>3</b>	<b>17.6</b>	<b>17</b>	<b>.4</b>
NMKP	Brahman	8	66.7	4	33.3	12	.3
	Chhetri	23	74.2	8	25.8	31	.8
	Janjati	12	85.7	2	14.3	14	.3
	Dalit	7	77.8	2	22.2	9	.2
	<b>Total</b>	<b>50</b>	<b>75.8</b>	<b>16</b>	<b>24.2</b>	<b>66</b>	<b>1.6</b>
NSP A	Brahman	6	75.0	2	25.0	8	.2
	Chhetri	4	66.7	2	33.3	6	.1
	Janjati	2	50.0	2	50.0	4	.1
	Dalit	4	57.1	3	42.9	7	.2
	Muslim	3	100.0			3	.1
	Madhesi	16	80.0	4	20.0	20	.5
	<b>Total</b>	<b>35</b>	<b>72.9</b>	<b>13</b>	<b>27.1</b>	<b>48</b>	<b>1.2</b>
JMN	Brahman	5	100.0			5	.1
	Chhetri	10	90.9	1	9.1	11	.3
	Janjati	5	71.4	2	28.6	7	.2
	Dalit	6	66.7	3	33.3	9	.2
	Muslim	1	100.0			1	.0
	Madhesi	2	66.7	1	33.3	3	.1
	<b>Total</b>	<b>29</b>	<b>80.6</b>	<b>7</b>	<b>19.4</b>	<b>36</b>	<b>.9</b>
RJM	Brahman	7	87.5	1	12.5	8	.2
	Chhetri	8	66.7	4	33.3	12	.3
	Janjati	4	100.0			4	.1
	Dalit	5	83.3	1	16.7	6	.1
	<b>Total</b>	<b>24</b>	<b>80.0</b>	<b>6</b>	<b>20.0</b>	<b>30</b>	<b>.7</b>
MJF	Brahman	10	66.7	5	33.3	15	.4
	Chhetri	10	66.7	5	33.3	15	.4
	Janjati	5	100.0			5	.1
	Dalit	5	83.3	1	16.7	6	.1
	<b>Total</b>	<b>30</b>	<b>73.2</b>	<b>11</b>	<b>26.8</b>	<b>41</b>	<b>1.0</b>
JNM	Brahman	3	75.0	1	25.0	4	.1
	Chhetri	3	60.0	2	40.0	5	.1
	<b>Total</b>	<b>6</b>	<b>66.7</b>	<b>3</b>	<b>33.3</b>	<b>9</b>	<b>.2</b>

**Note:**

UCPN:	Communist Party of Nepal (Maoist)	SLRP:	Sanghiya Limbuwan Rastriya Parishad
NC:	Nepali Congress	RPP:	Rastriya Prajatantra Party
SLRP M:	Sanghiya Limbuwan Rastriya Parishad Manch	RPP N:	Rastriya Prajatantra Party Nepal

***Disclaimer: Copy & Propagation of data/information from Jagaran Women Resource Center is appreciated provided that the source is duly accredited.***

NMKP:	Napal Majdur Kisan Party	CPN (U):	Communist Party of Nepal (United)
ML:	Communist Party of Nepal (Marxist and Leninist)	CPN U:	Communist Party of Nepal (Unified)
UML:	Communist Party of Nepal (Unified Marxist and Leninist)	RJM:	Rastriya Jana Morcha
Chure:	Chure Bhawar Rastriya Yekata Party	MJF N:	Madhesi Janadhikar Forum Nepal
SP:	Sadbhawana Party	SLRM:	Sanghiya Loktantrik Rastriya Manch
RJP:	Rastriya Janashakti Party	SJP:	Samajbadi Janta Party
NSP D:	Nepal Sadbhawana Party (Democratic)	NSP A:	Nepal Sadbhawana Party (Aanandadevi)
MJF D:	Madhesi Janadhikar Forum (Democratic)	NJD:	Nepali Janata Dal
KNF:	Khambuwan National Forum	DJP:	Dalit Janjati Party
JMN:	Janamorcha Nepal	NRP:	Nepa Rastriya party
		TMLP:	Terai Madesh Loktantric Party

***Disclaimer: Copy & Propagation of data/information from Jagaran Women Resource Center is appreciated provided that the source is duly accredited.***

***Disclaimer: Copy & Propagation of data/information from Jagaran Women Resource Center is appreciated provided that the source is duly accredited.***